

AN INTRODUCTION MSES

MSES environmental professionals have extensive experience in dealing with the issues faced by County School Systems. MSES performs a variety of services for County School Systems including:

ENVIRONMENTAL SERVICES

MSES Architects, a Division of MSES Consultants, Inc., offers a full complement of architectural and engineering services. The MSES team is a multidisciplinary firm with a staff of 112 professionals, serving both private and public clients throughout West Virginia since 1976.

Over the years, our full service team has been involved in the planning, funding and design of over 100 educational projects in numerous county school systems. Projects include additions, upgrades, renovations and new construction of elementary schools, middle schools, high schools and vocational/technical centers.

Our experienced and professional architectural design team is comprised of registered architects, interns, interior designers, environmentalists, technicians and LEED- accredited professionals. Combined with our well established engineering and environmental group, MSES provides the full service disciplines required to address all of our clients project needs.

Contact any one of our design team members to discuss how MSES can assist you in your day-to-day operations or upcoming projects.



The presence of poor indoor air quality results in potentially harmful exposure of students and staff to microbiological contaminants and airborne chemicals. MSES is experienced in the evaluation of school buildings for identification of indoor air quality contaminants. We maintain state of the art equipment for the investigation and sampling of indoor air contaminants. MSES can also perform a variety of ventilation studies including negative air assessments and exhaust hood assessments.

INDOOR AIR QUALITY

ASBESTOS SERVICES

Remodeling and demolition require assessing existing building materials for the presence of asbestos. MSES can assess building materials for asbestos, prepare bid documents, provide project monitoring, and clearance air monitoring to insure that the school is safe for re-occupancy once the asbestos materials are abated. Also, MSES can provide AHERA 6 month and 3 year inspections of school buildings, insure that asbestos management plans comply with State and Federal regulations.

MSES is as dedicated as you are in making sure that your school buildings are safe. We can provide safety programs, facility audits, training, and emergency equipment inspections. MSES will work with you to insure regulatory compliance and most importantly a safe environment for your students and employees.

SAFETY

MSES provides a variety of environmental services including testing air, water, solid waste, underground and above ground storage tanks, NPDES storm-water permit applications and support for Bus Garages.

ENVIRONMENTAL

The WV Above Ground Storage Tank regulation requires above ground storage tanks with a capacity of 1,320 gallons or greater be registered unless the tank contains clean water. MSES has registered professional engineers who can assist in the inspection and registration requirements of the West Virginia regulation.

ABOVE GROUND STORAGE TANKS

INDUSTRIAL HYGIENE

The evaluation of maintenance/ garage areas, Vo-Tech Centers, and industrial/commercial project training areas, is an important issue for all employers. Whether you're dealing with an exposure issue or a nuisance odor, MSES has the experience and equipment needed to perform exposure monitoring for organic vapors, particulates, and noise.

MSES' Corrosion Engineering Division offers a full line of services including

CORROSION ENGINEERING

corrosion testing of piping and storage tanks. We can also provide operating and emergency plans, regulatory audits, and equipment inspections.

FUNGAL ASSESSMENT

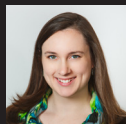
MSES can perform air sampling to evaluate airborne fungal concentrations using culture plates and spore trap cassettes. We can perform bulk and wipe sampling to determine the species of fungi present. We can also evaluate moisture and water impacted materials to determine the potential growth of fungi.



JEFF WISE
Executive Director



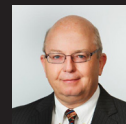
PAM WEAN
Senior Architect



STACEY BOWERS
Project Architect



NATE ZIRKLE
Intern Architect



JOHN KEELING
Principal & Project Manager



RON CUTLIP
Sr. Environmental & Safety Specialist



JOHN PARROTTA
Environmental Scientist

FEATURED EDUCATIONAL PROJECTS



FRANKLIN ELEMENTARY SCHOOL

Pendleton County Schools

- 45,200 SF / 290 students / Pre-K - 6 grades
- First WWSBA Design-Build new-construction
- First school in the United States to be constructed of Cross-Laminated Timbers (CLT); engineered solid structural wood panels
- Featured in a Case Study in WoodWorks publication



EAST FAIRMONT MIDDLE SCHOOL

Marion County Schools

- 93,000 SF / 735 students / 5 - 8 grades
- Multi-level plan designed using school colors and mascot inside and outside



FAIRMONT SENIOR HIGH SCHOOL

Marion County Schools

- 129,300 SF / 790 students / 9 - 12 grades
- Listed on National Register of Historic Places
- Interior and Exterior Renovations
- New two-story Media Center with skylight

ARCHITECTURE
CIVIL ENGINEERING
ELECTRICAL ENGINEERING
MECHANICAL ENGINEERING
STRUCTURAL ENGINEERING
LEED ACCREDITED PROFESSIONALS
ENVIRONMENTAL
SURVEYING



MSES ARCHITECTS

1000 Green River Drive, Suite 200
Fairmont, West Virginia 26554

p: 304.366.9700
f: 304.366.2788

m sesarchitects.com



ENVIRONMENTAL SERVICES
FOR SCHOOLS

m sesarchitects.com